

Enbridge Pipelines Inc.

Infrastructure Solutions for the Bakken and Three Forks



Kevin Hatfield
Senior Director and Asset Manager,
Enbridge Gathering Systems

*Montana Petroleum Association Annual Meeting
Billings, Montana
September 1, 2010*

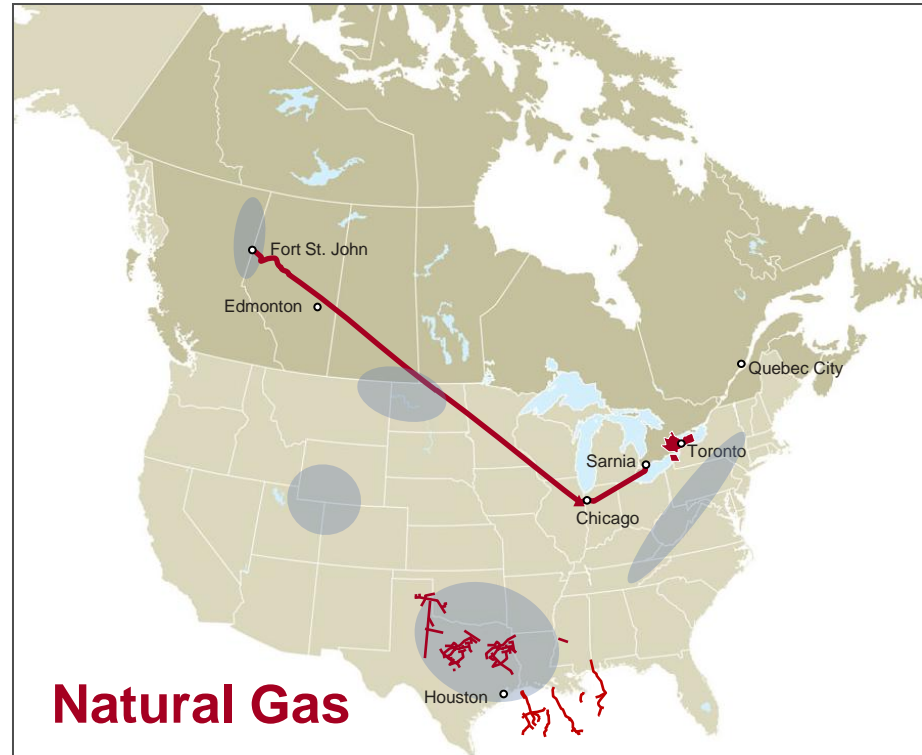


Forward Looking Statements



Certain information provided in this presentation constitutes forward-looking statements. The words "anticipate", "expect", "project" and similar expressions are intended to identify such forward looking statements. Although Enbridge believes that these statements are based on information and assumptions which are current, reasonable and complete, these statements are necessarily subject to a variety of risks and uncertainties pertaining to operating performance, regulatory parameters, economic conditions and commodity prices. You can find a discussion of those risks and uncertainties in our SEC filings. While Enbridge makes these forward-looking statements in good faith, should one or more of these risks or uncertainties materialize, or should underlying assumptions prove incorrect, actual results may vary significantly from those expected. Enbridge assumes no obligation to publicly update or revise any forward looking statements made herein or otherwise, whether as a result of new information, future events or otherwise.

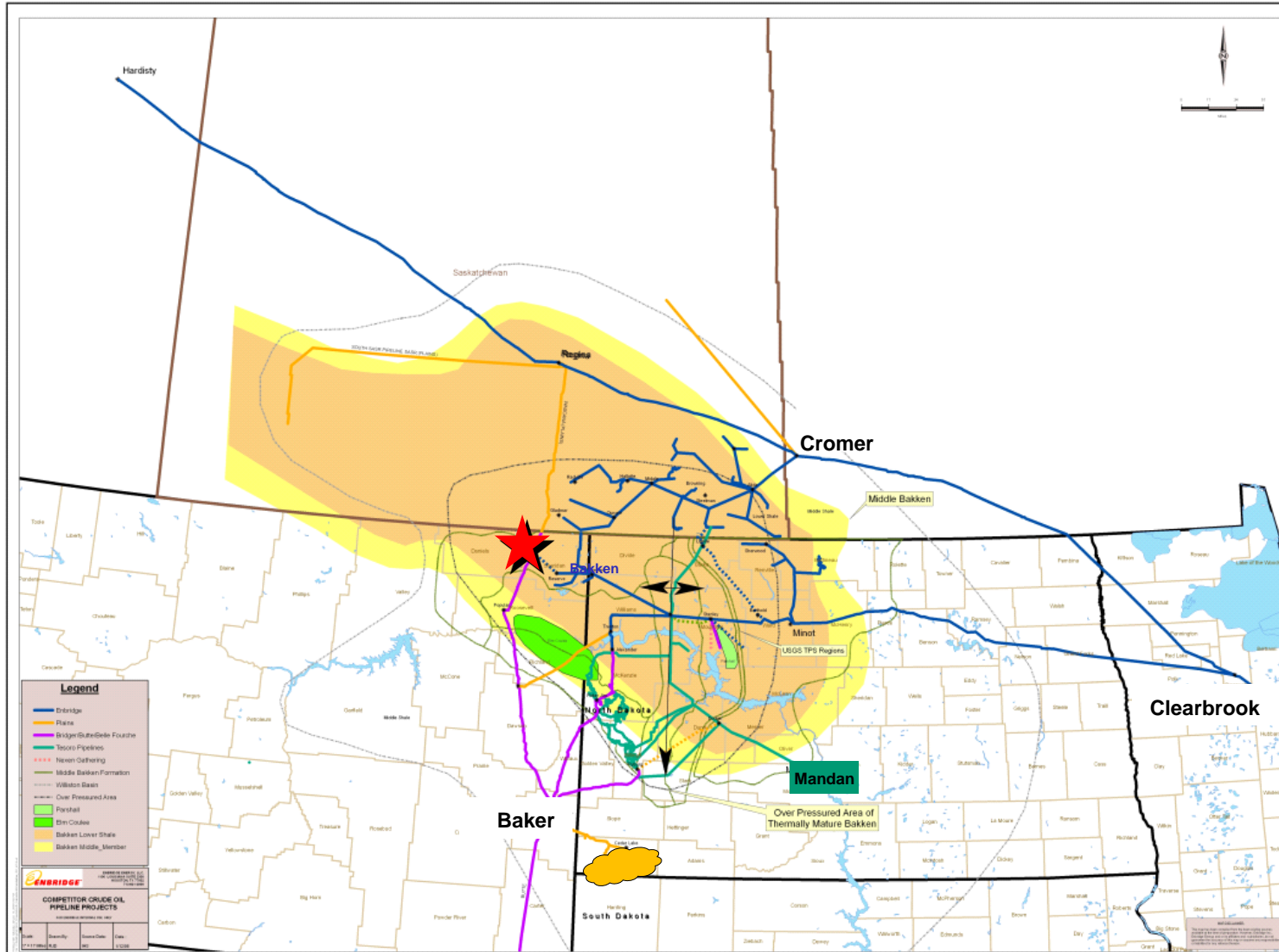
Enbridge Inc. - Overview



Enbridge's Edmonton Terminal is the starting point of the Enbridge Mainline system, the world's longest, most complex crude oil pipeline system. With a capacity of 2.1 million barrels per day, we serve Cushing, Chicago and the Upper Midwest markets and represent 12% of total imports into the United States. We also have natural gas systems in Texas, Offshore Gulf of Mexico and provide WCSB gas and NGL production with access to US markets.

The Bakken and Three Forks are a key component of our growing Enbridge portfolio.

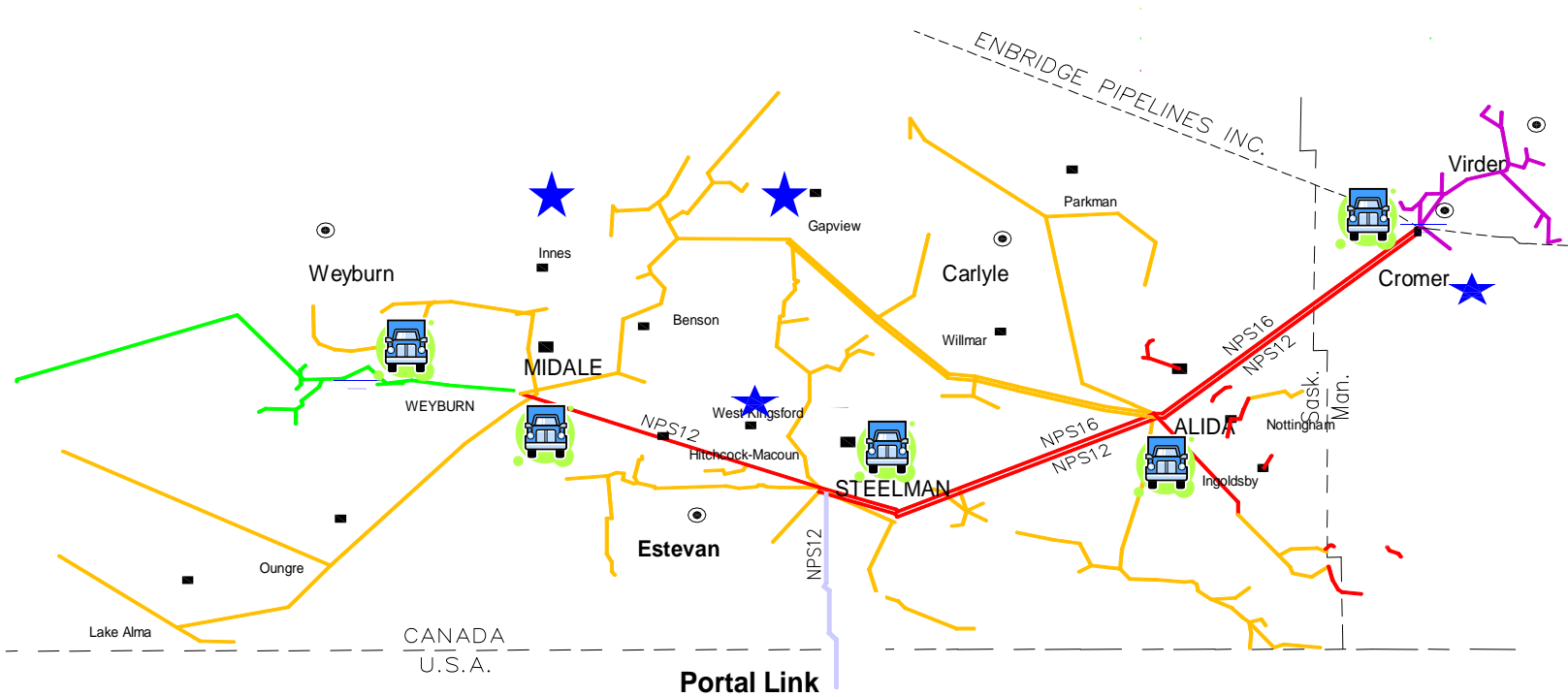
Bakken & Three Forks Production Areas



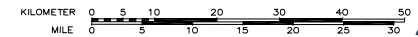
Enbridge Pipelines (Saskatchewan) Inc. Phase 2 Expansion Projects



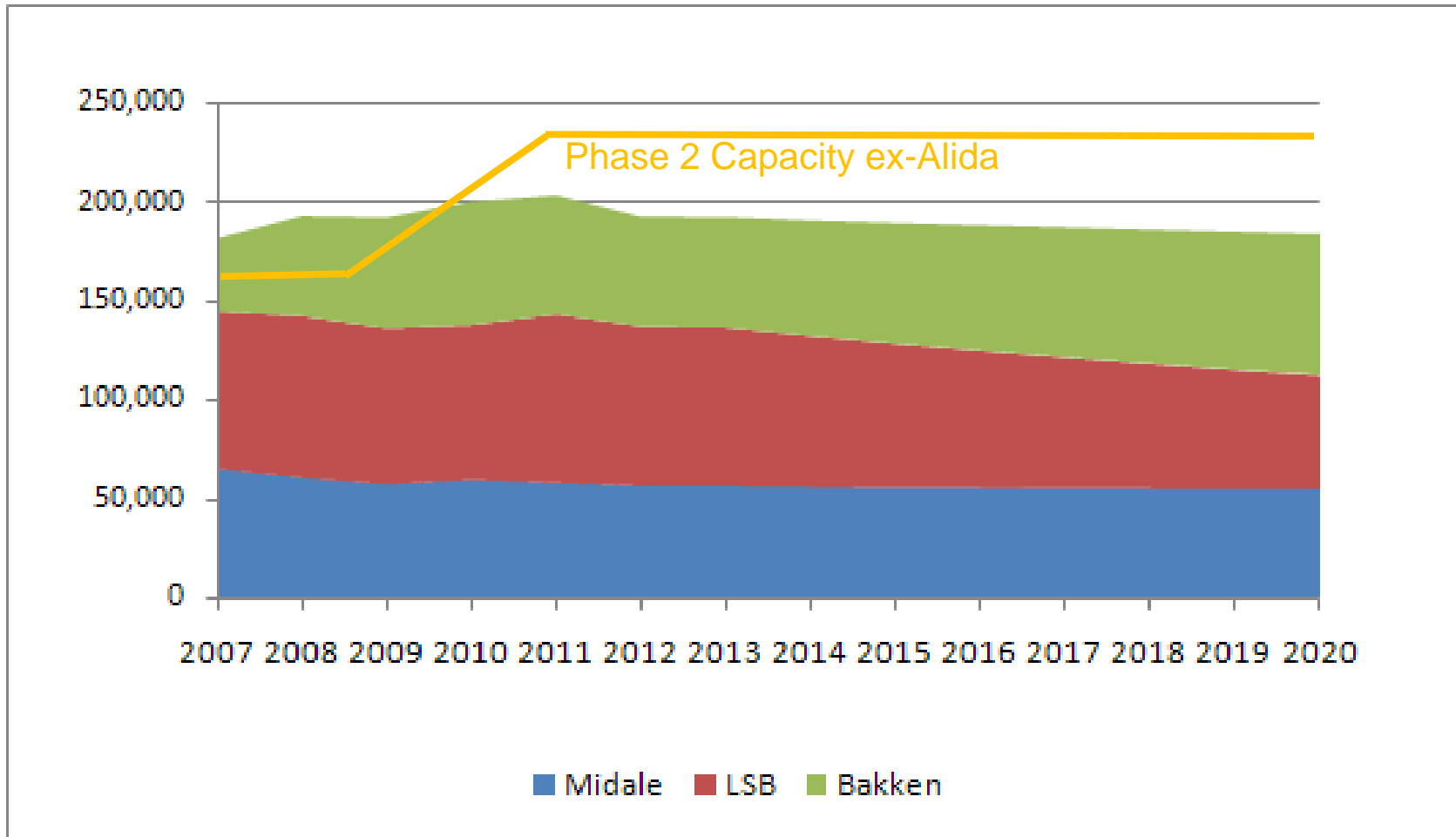
- ENBRIDGE PIPELINES (WESTSPUR) INC.
- ENBRIDGE PIPELINES (SASKATCHEWAN) INC.
- ENBRIDGE PIPELINES (WEYBURN) INC.
- ENBRIDGE PIPELINES (VIRDEN) INC.
- ENBRIDGE WESTSPUR PORTAL LINK PIPELINE (IDLED)



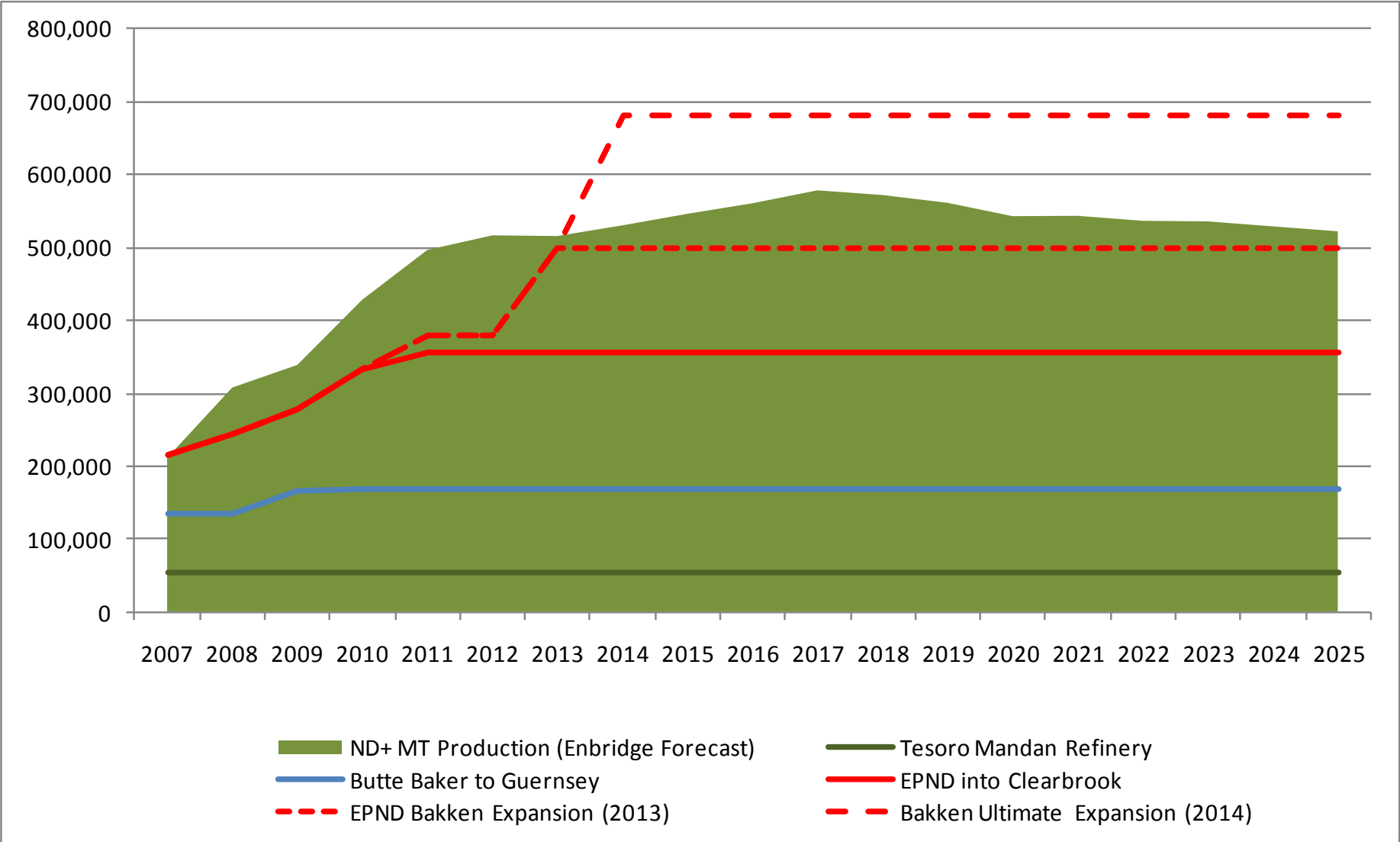
HIGH VOLUME ACTIVITY AREAS



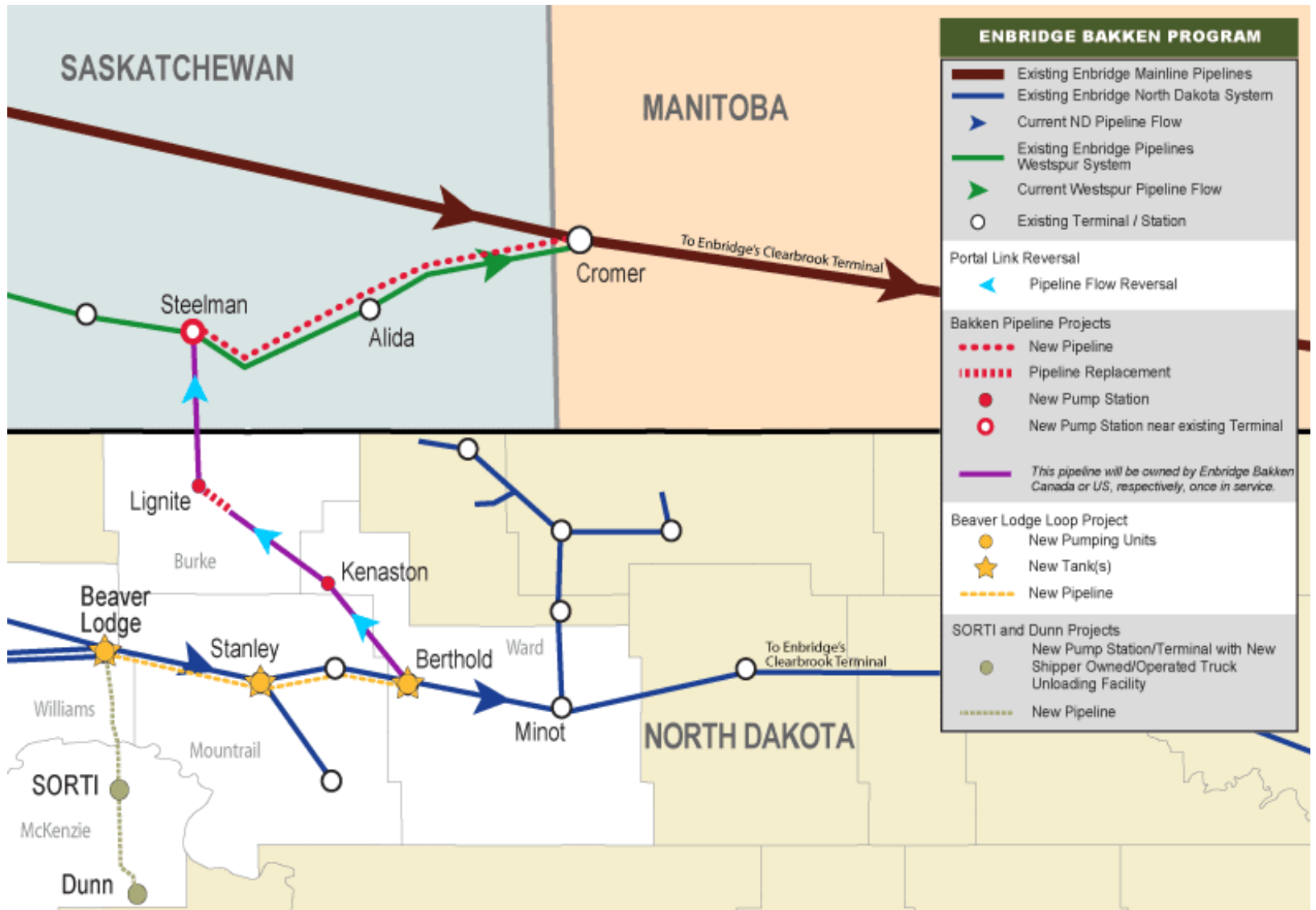
Production Forecast SE Saskatchewan & SW Manitoba



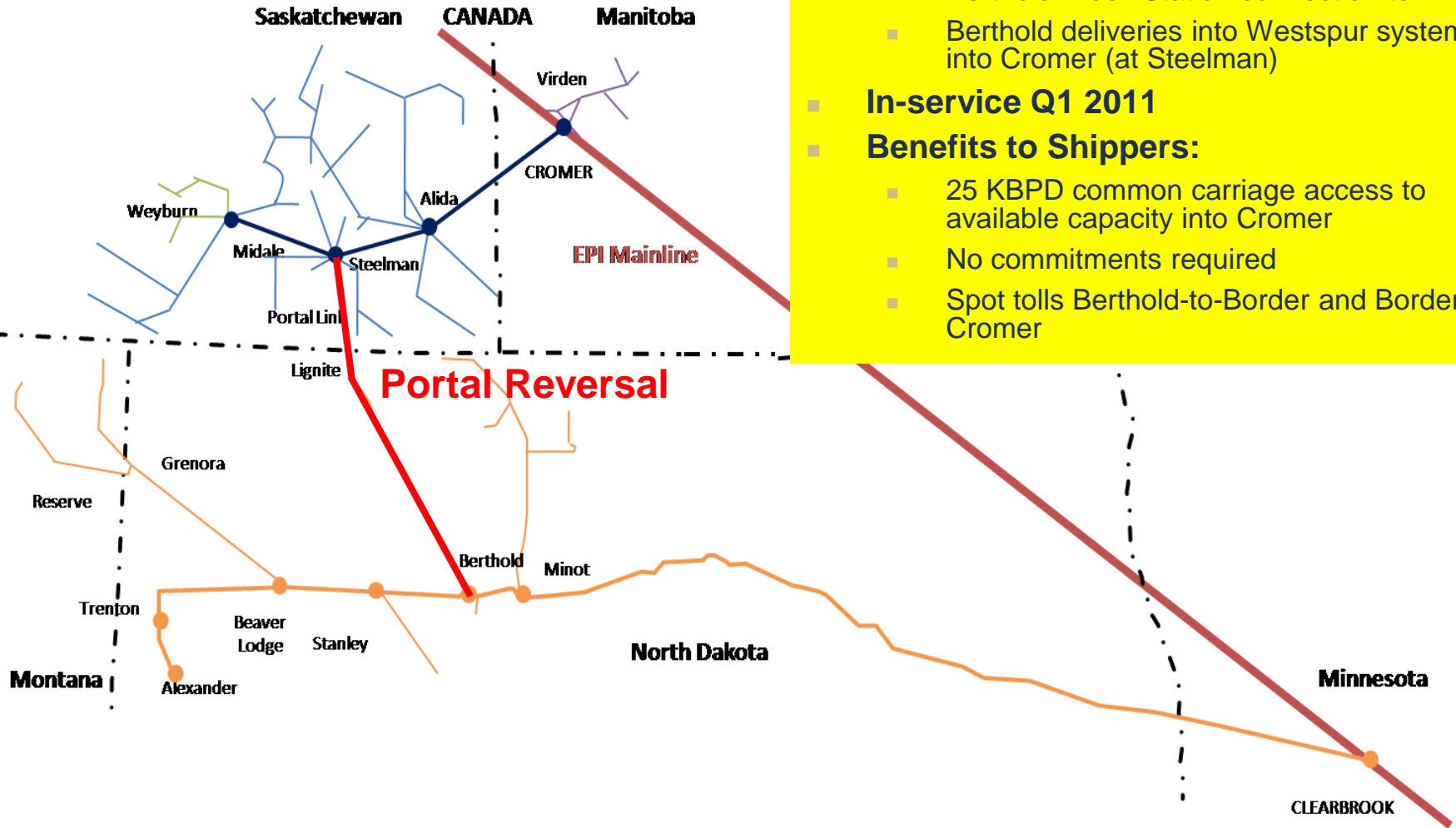
More Bakken Production Forecasted for Eastern Montana & North Dakota



Enbridge's Bakken Expansion Program will Double its "North Dakota" Capacity Again

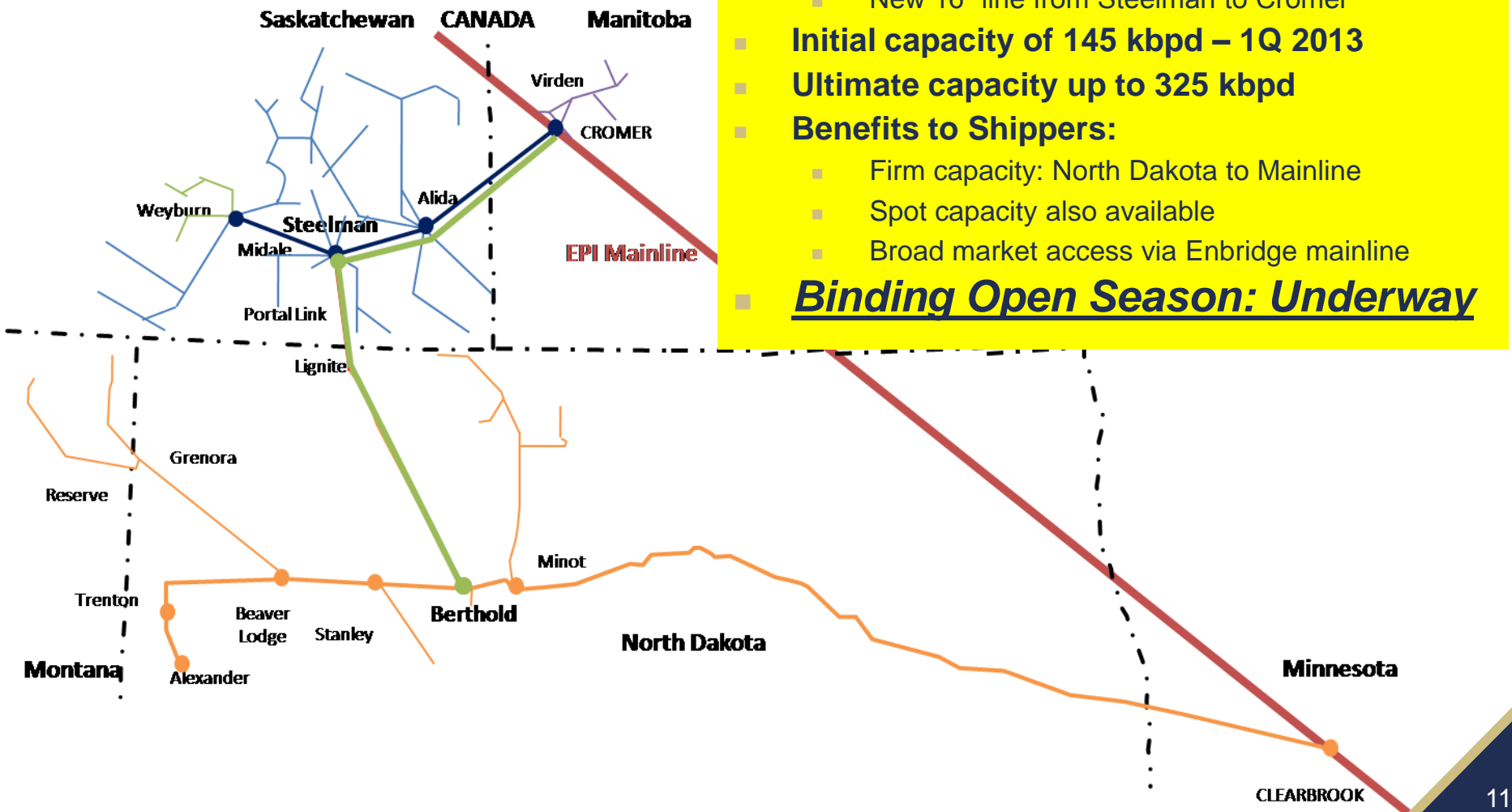


Portal Reversal Expansion Project 25,000 bpd in 1Q 2011



- **Scope:**
 - Reversal and reactivation of Portal Link
 - Berthold Truck Station connection to PREP
 - Berthold deliveries into Westspur system into Cromer (at Steelman)
- **In-service Q1 2011**
- **Benefits to Shippers:**
 - 25 KBPD common carriage access to available capacity into Cromer
 - No commitments required
 - Spot tolls Berthold-to-Border and Border-to-Cromer

Bakken US and Canada Expansion: 145,000 bpd in 1Q 2013

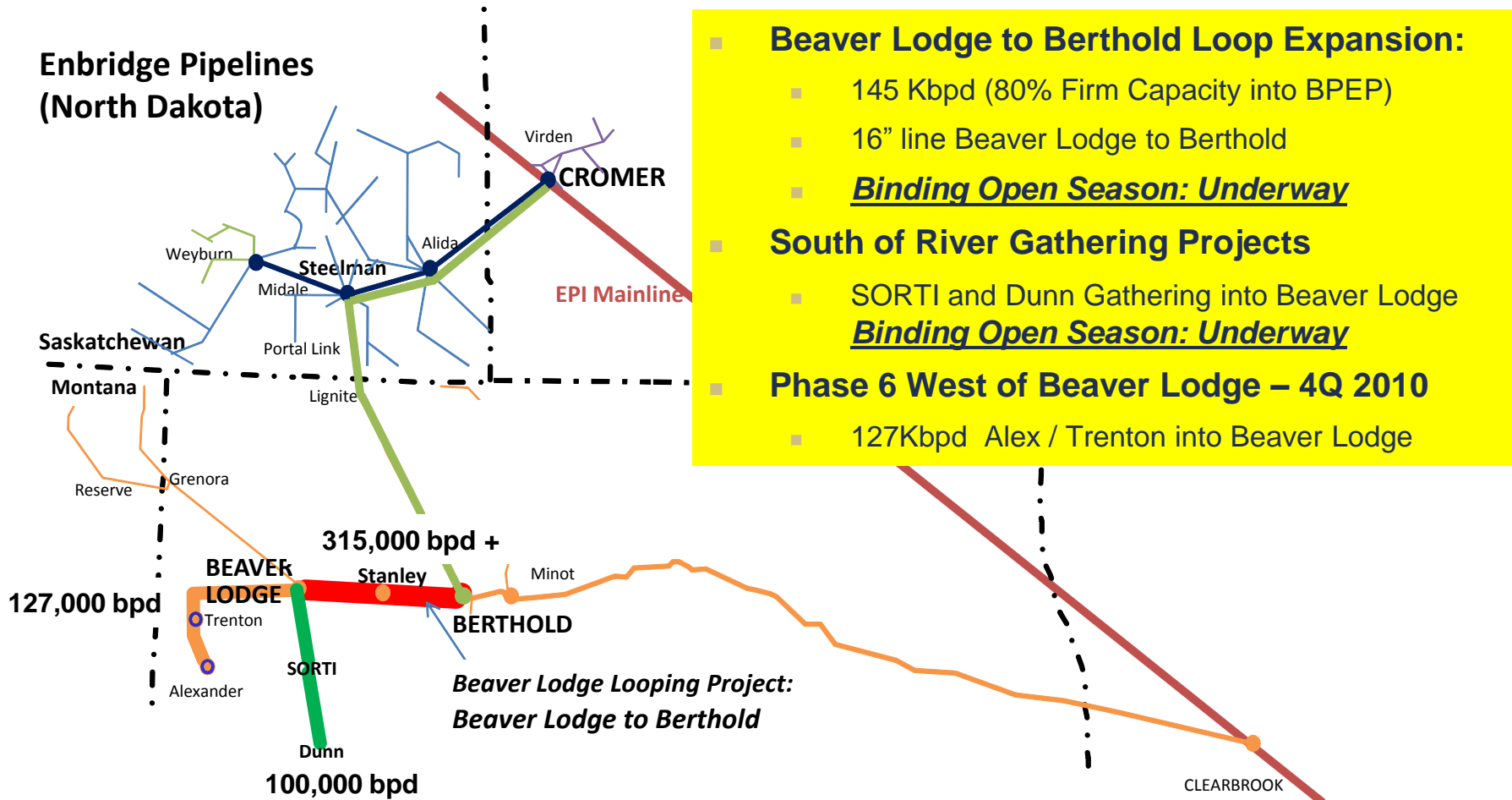


- **Scope:**
 - Expand PREP capacity into Steelman
 - New 16" line from Steelman to Cromer
- **Initial capacity of 145 kbpd – 1Q 2013**
- **Ultimate capacity up to 325 kbpd**
- **Benefits to Shippers:**
 - Firm capacity: North Dakota to Mainline
 - Spot capacity also available
 - Broad market access via Enbridge mainline
- **Binding Open Season: Underway**

Other Expansion Projects: Capacity into Berthold



Enbridge Pipelines (North Dakota)



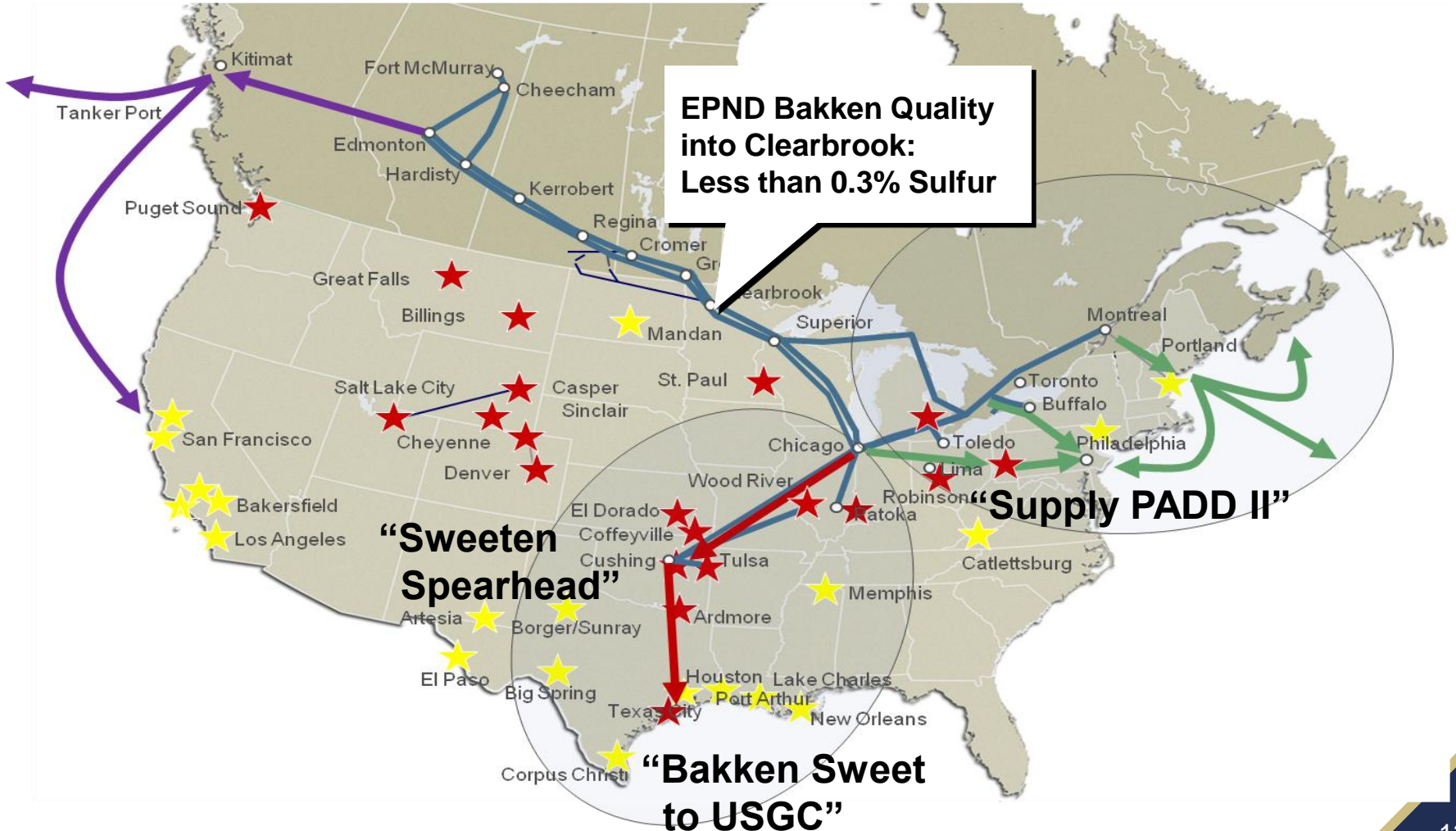
- **Beaver Lodge to Berthold Loop Expansion:**
 - 145 Kbps (80% Firm Capacity into BPEP)
 - 16" line Beaver Lodge to Berthold
 - **Binding Open Season: Underway**
- **South of River Gathering Projects**
 - SORTI and Dunn Gathering into Beaver Lodge
 - **Binding Open Season: Underway**
- **Phase 6 West of Beaver Lodge – 4Q 2010**
 - 127Kbps Alex / Trenton into Beaver Lodge

*Beaver Lodge Looping Project:
Beaver Lodge to Berthold*

Preserving Bakken Crude Quality: Enbridge's Mainline Concern



Liquids Pipelines
Broadening Market Access



Questions?



Enbridge: Ahead of the Production Curve

EPND's Phase 5 and 6 Expansions have doubled North Dakota's pipeline capacity to 161,500 bpd, with 127,000 bpd directly accessible to Montana producers and shippers.

EPND's Portal Reversal (2011) and Bakken Pipeline Expansion Projects (2012) will for a second time double its Williston Basin pipeline capacity into major US markets.

At Enbridge, Energy meets People, and has for more than 60 years.

We will meet the rising demand for safe, reliable and cost-effective energy transportation here at home.



Delivering Secure North American
Petroleum for 60 years.

www.enbridgeUS.com